

Sponsored by the  
**National Swine Registry**

# 2022 NATIONAL PICTURE JUDGING CONTEST

The data used in this contest is intended for educational purposes and is not the actual data for the pigs pictured. However, the figures accompanying the pictures will be used by our official judges to determine the official placings.

To enter the contest mail in the included form or visit [nationalswine.com](http://nationalswine.com) to enter online.



# 2022 National Picture Judging Contest

## Official Entry Form

- Letter
- Class 1**  **Duroc Boars**
  - Class 2**  **Hampshire Boars**
  - Class 3**  **Landrace Boars**
  - Class 4**  **Yorkshire Boars**
  - Class 5**  **Duroc Gilts**
  - Class 6**  **Hampshire Gilts**
  - Class 7**  **Landrace Gilts**
  - Class 8**  **Yorkshire Gilts**
  - Class 9**  **Grand Drive Barrows**
  - Class 10**  **Crossbred Market Hogs**

## Instructions

- Rank the animals in each of the 10 classes listed to the left
- Mark the official entry form (left) with the letter that corresponds to your placing for each class
- Only one letter placing per class

1	2	3	4	A
1	2	4	3	B
1	3	2	4	C
1	3	4	2	D
1	4	2	3	E
1	4	3	2	F
2	1	3	4	G
2	1	4	3	H
2	3	1	4	I
2	3	4	1	J
2	4	1	3	K
2	4	3	1	L

3	1	2	4	M
3	1	4	2	N
3	2	1	4	O
3	2	4	1	P
3	4	1	2	Q
3	4	2	1	R
4	1	2	3	S
4	1	3	2	T
4	2	1	3	U
4	2	3	1	V
4	3	1	2	W
4	3	2	1	X

Entries must be postmarked or entered online by Feb. 1, 2022

**Individual divisions:**

Junior division     College division     Adult division    For office use only: \_\_\_\_\_

Name \_\_\_\_\_

Address \_\_\_\_\_ City \_\_\_\_\_ State \_\_\_\_\_ Zip \_\_\_\_\_

Phone \_\_\_\_\_ E-mail \_\_\_\_\_

**Team divisions:**

4-H Team     FFA Team     College Team    For office use only: \_\_\_\_\_ For office use only: \_\_\_\_\_

(4-H and FFA team must have four members ONLY; College team must have five members ONLY)

PRINT team members' names: 1. \_\_\_\_\_ 2. \_\_\_\_\_

3. \_\_\_\_\_ 4. \_\_\_\_\_ 5. \_\_\_\_\_

School or Club Name \_\_\_\_\_

Address \_\_\_\_\_ City \_\_\_\_\_ State \_\_\_\_\_ Zip \_\_\_\_\_

### Divisions

Individual divisions include Junior, Collegiate and Senior. Team divisions include 4-H, FFA and Collegiate. Teams MUST consist of: 4-H and FFA - four total members (no more, no less); Collegiate - five total members (no more, no less). There is NO MAXIMUM number of teams per school or club, but each team must have a different name.

### Entries

Each individual may enter only ONE time, either as an individual or on one team (i.e., cannot enter on both a 4-H and a FFA team). All team entries will automatically be entered as individuals as well. Enter online at [www.nationalswine.com](http://www.nationalswine.com), or mail legible entries to: Picture Judging Contest, 2639 Yeager Rd., West Lafayette, IN 47906.

Additional copies of this form can be downloaded at [www.nationalswine.com](http://www.nationalswine.com). No reprints will be mailed from the NSR office. Remember, this is an educational event.

Each individual or team member must complete their own entry form, and only one entry should appear on each mailed form. This contest is open to all purebred seedstock enthusiasts in the United States.

### Results

Official placings, reasons and contest winners will appear online at [www.nationalswine.com](http://www.nationalswine.com) after April 1, 2022, and in the 2022 April/May issue of *Seedstock EDGE*. All ties will be broken by the highest score in chronological class order. First through fifth place will be named in each division, and plaques will be awarded to the first-place winner of each division.

**Enter online at [nationalswine.com](http://nationalswine.com)**

# EXPLANATION OF TERMS:

**Expected Progeny Difference (EPD)** – An EPD is the best estimate of a sire's or dam's genetic worth, given the information available. It is the actual difference in performance a producer can expect from future progeny of a sire or dam, relative to the future progeny of an average tested parent.

**Swine Testing and Genetic Evaluation System (STAGES™)** – A genetic evaluation system provided to the members of the four breed associations of the National Swine Registry (NSR). STAGES™ utilizes performance records for numerous growth, carcass and maternal measures to predict the genetic value of each pig and its parents.

## EPDs:

**Backfat (BF):** Expressed in inches, this EPD is a predictor of the difference in external fat thickness at the 10<sup>th</sup> rib. Animals with negative (-) EPDs for backfat will produce offspring that have less backfat at harvest than offspring of parents with higher EPDs.

**Pounds of Lean (LBS):** A genetic predictor of pounds of fat-free lean adjusted to a 185-pound carcass, or approximately a 250-pound live weight. This EPD is calculated from the EPDs for Backfat and Loin Eye Area. A sire with a positive (+) EPD for LBS will produce offspring that yield a higher percentage of lean and have a greater chance of obtaining full value on a lean-based carcass grid.

**Days to 250 pounds (DAYS):** A prediction of an individual's genetic merit for growth performance to a 250-pound live weight. Animals with a negative (-) EPD for DAYS will produce offspring that require fewer days to reach market weight when compared to the offspring of individuals with positive (+) genetic values for DAYS. Selection on this EPD will produce progeny that aid in earlier building close outs.

**Feed Efficiency (FE):** Expressed in pounds, this EPD is a predictor of the amount of feed required to generate one pound of gain during the finishing phase of production and is calculated from the EPDs for BF and DAYS. Selection of sires with negative (-) EPDs will produce progeny that more efficiently convert feed to gain when compared to sires with higher EPDs for FE. This EPD can be used to genetically decrease feed costs.

**Number Born Alive (NBA):** An expression of the genetic merit for the number of live pigs farrowed in a litter. Daughters of sires with positive (+) EPDs for NBA will farrow a greater number of live pigs than daughters of sires with lower EPDs for NBA.

**Number Weaned (NW):** A genetic predictor of the total number of pigs weaned within a given parity. Daughters of sires with positive (+) EPDs for NW will wean larger litters than daughters of sires with lower genetic values for NW.

**Loin Eye Area (LEA):** Expressed in square inches, this EPD is a predictor of an individual's genetic merit for 10<sup>th</sup> rib loin eye area adjusted to a 250-pound live weight. Animals with a positive (+) EPD for LEA will produce progeny with more loin muscle when compared to the offspring of animals with negative (-) genetic values for LEA.

**Wean to Estrus Interval (WTE):** Expressed in days, this EPD is a genetic predictor of the number of days required for a female to return to a serviceable heat after weaning. Daughters of sires with negative (-) EPDs for WTE will require fewer days to return to estrus after weaning than daughters of sires with higher EPDs. This EPD is the most efficient selection tool for genetic improvement of fertility and non-productive sow days.

**Sow Productivity Index (SPI):** An economic index that ranks individuals for reproductive traits. SPI weights the EPDs for Number Born Alive, Number Weaned and Litter Weight relative to their economic values. Each point of SPI represents \$1 per litter produced by every daughter of a sire. When sow efficiency is the primary concern, SPI may be the most effective selection tool for simultaneous improvement of maternal traits.

**Maternal Line Index (MLI):** An economic index designed for selection of seedstock used to produce replacement gilts for crossbreeding programs. MLI weights EPDs for both terminal and maternal traits relative to their economic values, with approximately twice as much emphasis on reproductive traits relative to post-weaning traits. Each point of MLI represents \$1 per litter produced by every daughter of a sire.

**Terminal Sire Index (TSI):** An economic index designed for the selection of seedstock for use in a terminal crossbreeding program. Animals selected for high TSI are designed to excel in lean growth and efficiency from weaning to harvest. TSI weights EPDs for Backfat, Days to 250 Pounds, Pounds of Lean, and feed/pound of gain relative to their economic values. Each additional index point difference is equal to \$0.10 per market hog.

## Actual Data:

**Weight Per Day of Age (Wda):** Based on actual weight and age, this measure is the weight gained per day of age averaged over the life of the pig.

**10<sup>th</sup> Rib Backfat (Bf):** Expressed in inches, this is an actual ultrasound measure of backfat at the 10<sup>th</sup> rib and is adjusted to 250 pounds.

**Loin Eye Area (Lea):** Expressed in square inches, this is the actual ultrasound measurement of the loin eye size at the 10<sup>th</sup> rib and is adjusted to 250 pounds.

**Intramuscular Fat (Imf):** Expressed as a percentage, this value is an ultrasound measure of the lipid content of the loin muscle. Higher levels of Intramuscular Fat (IMF) are desired for meat quality based markets.

**Actual Number Born Alive (Nba):** This value is the actual number of pigs born from the dam's parity when the pig was born and are measurements taken from the pig's dam.

**Actual Number Weaned (Nw):** This value is the actual number of pigs weaned from the dam's parity when the pig was born and are measurements taken from the pig's dam.

**Litter Weight (Lwt):** This is the actual cumulative weight of all pigs weaned from the pig's birth litter. This weight is recorded on the pig's dam and is adjusted to 21 days of lactation.

## Class 1 – Duroc Boars

Scenario: Rank these boars as they would be utilized in a commercial operation focusing on growth and meat quality. Terminally bound offspring will be marketed through the Certified DUROC Pork program.



Actual Data: 156 DAYS to 250, 7.9 LEA, 3.9 IMF, 118 TSI



Actual Data: 154 DAYS to 250, 8.0 LEA, 4.1, IMF 117 TSI



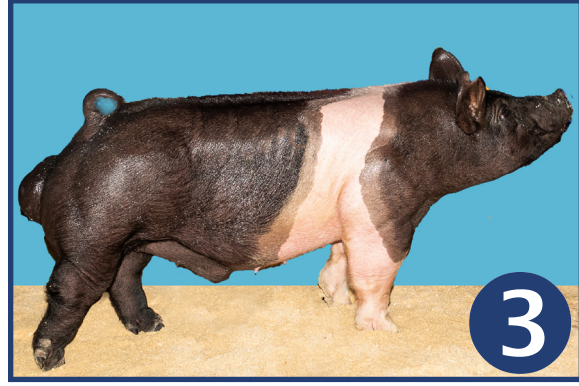
Actual Data: 149 DAYS to 250, 8.5 LEA, 4.6 IMF, 121 TSI



Actual Data: 161 DAYS to 250, 6.9 LEA, 3.1 IMF, 110 TSI

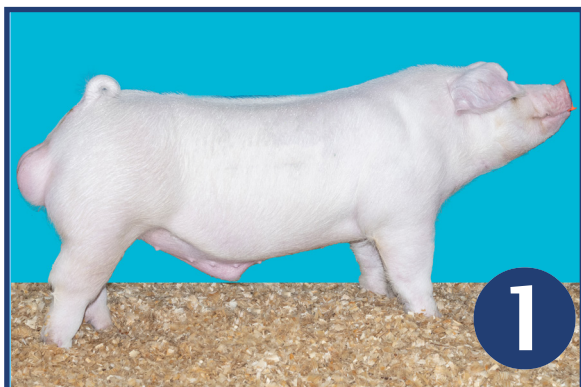
## Class 2 – Hampshire Boars

Scenario: Rank these boars as they would be utilized on purebred Hampshire sows to generate Hampshire Barrows for the new Pedigreed Hampshire Barrow Class at the 2022 Oklahoma Youth Expo.

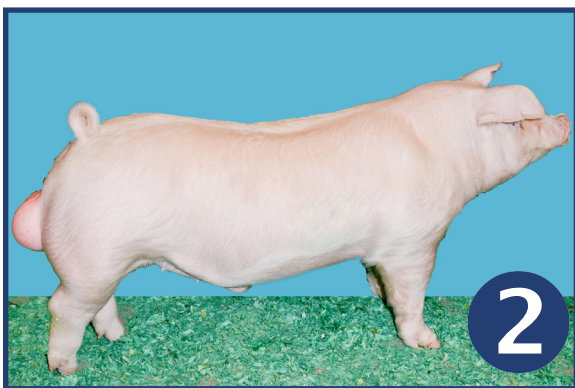


### Class 3 – Landrace Boars

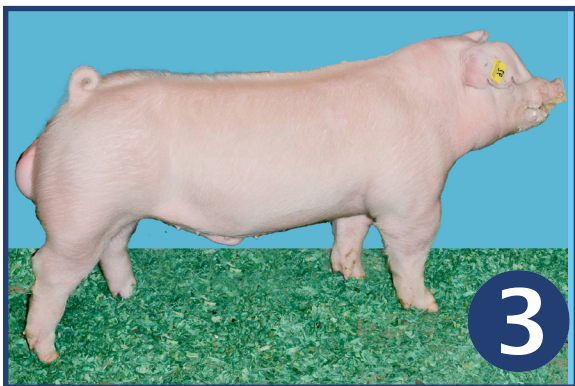
Scenario: Rank these boars as they would be selected for use in a purebred operation that primarily focuses on producing Landrace females for the purpose of F1 female production.



EPDs: +0.42 NBA, -0.14 WTE, 125



EPDs: +0.29 NBA, +0.17 WTE, 109 MLI



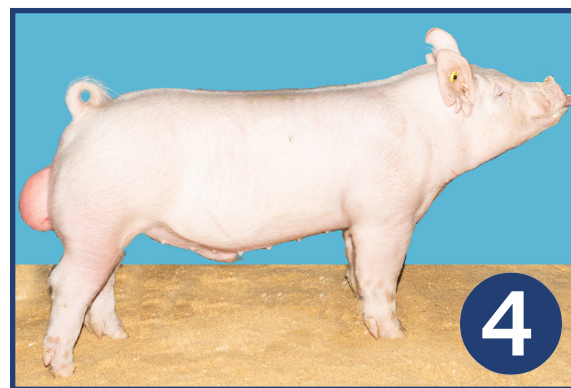
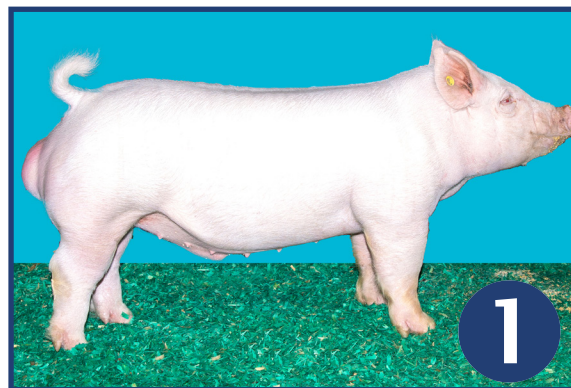
EPDs: +0.33 NBA, -0.09 WTE, 115 MLI



EPDs: +0.32 NBA, -0.08 WTE, 116 MLI

### Class 4 – Yorkshire Boars

Scenario: Rank these boars as they would be purchased by a showpig producer who plans to utilize these Yorkshire boars on his purebred sows for his daughter's Bred-and-Owned Project and some elite crossbred sows to generate candidates for the Purebred Influenced Crossbred Division at The Exposition and National Junior Summer Spectacular.

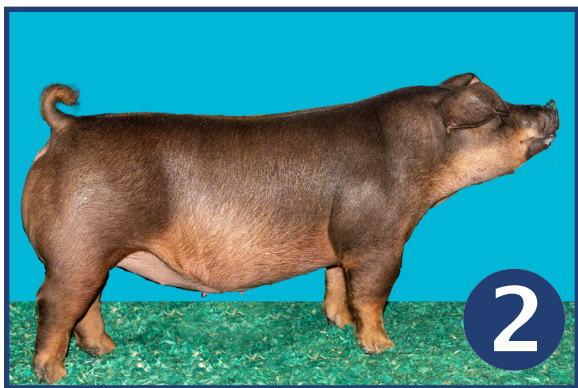


### Class 5 – Duroc Gilts

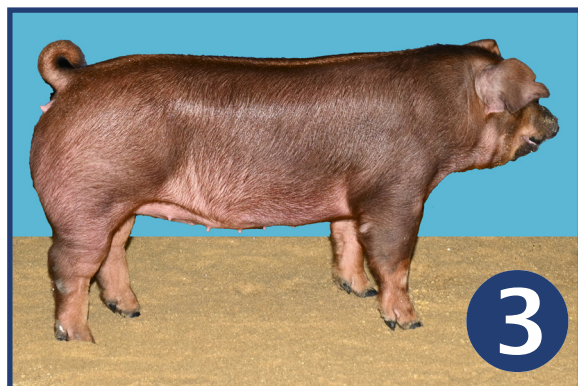
Scenario: Rank these gilts as replacements in a purebred Duroc operation that places special emphasis on generating boars for exhibition and domestic commercial clientele.



EPDs: -3.0 DAYS, +0.19 IMF, 115 TSI



EPDs: -2.9 DAYS, +0.20 IMF, 116 TSI



EPDs: -2.0 DAYS, +0.06 IMF, 107 TSI



EPDs: -3.2 DAYS, +0.21 IMF, 120 TSI

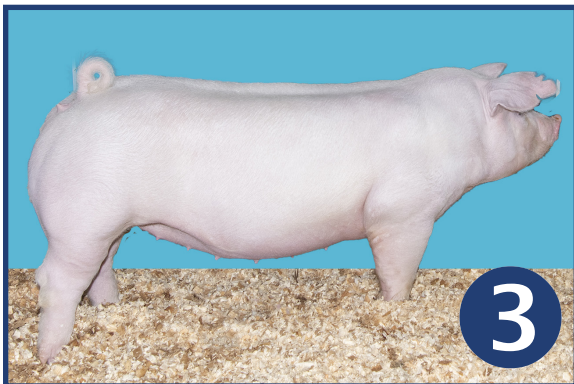
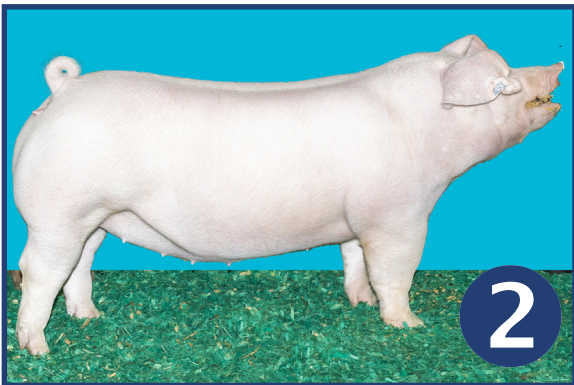
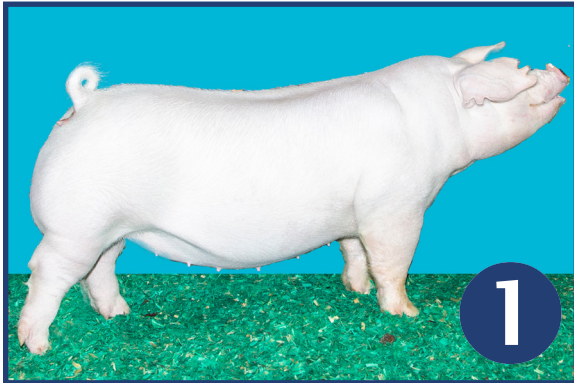
### Class 6 – Hampshire Gilts

Scenario: Rank these gilts as they would be purchased by a progressive Hampshire breeder focused on generating high quality Hampshire show gilts and capturing the unprecedented value of belted females at public auction.



### Class 7 – Landrace Gilts

Scenario: Rank these gilts as they would be selected as replacements in this young NJSA member's Landrace herd. His focus is generating competitive show gilts to help supplement his hard work in competing for Overall NJSA Premier Breeder.

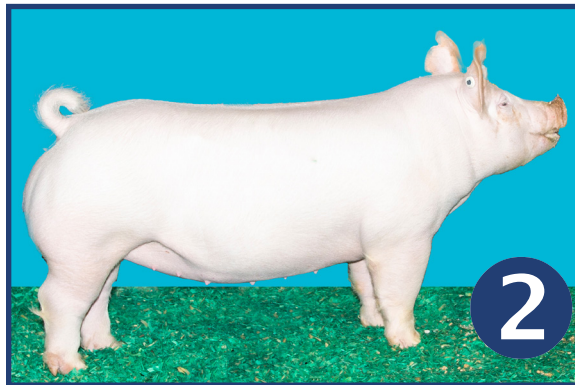


### Class 8 – Yorkshire Gilts

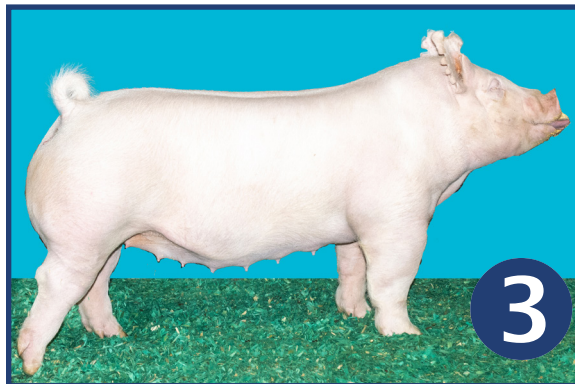
Scenario: Rank these gilts as they would be selected as replacements for a purebred Yorkshire operation that utilizes NSR Type Conference events and online sales to market breeding stock.



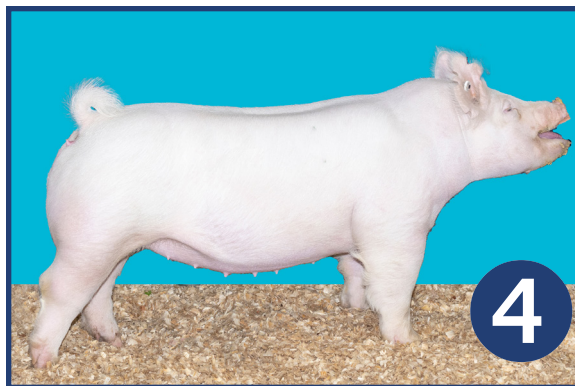
EPDs:+0.33 NBA, 115 MLI, 118 SPI



EPDs:+0.32 NBA, 118 MLI, 120 SPI

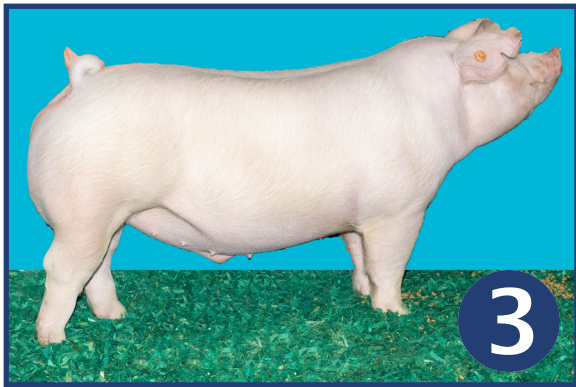


EPDs: +0.24 NBA, 110 MLI, 109 SPI



EPDs: +0.25 NBA, 107 MLI, 106 SPI

**Class 9 Grand Drive Barrows**



**Class 10 Crossbred Market Hogs**

